

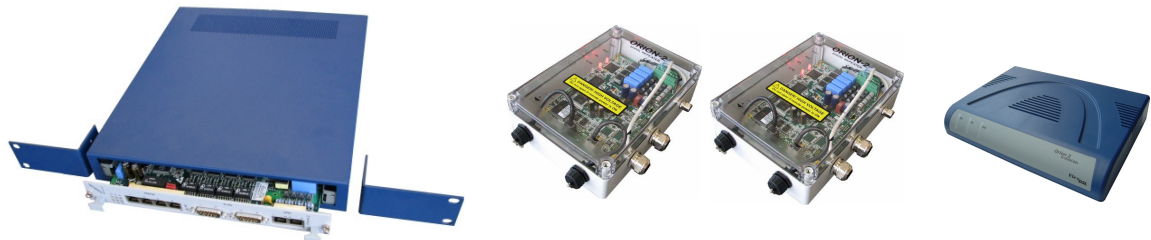
Orion2 Based FlexCON-2E1B/Eth-SR, V67

Good to Know about Orion's

Orion1 and Orion2 Modems from FlexDSL have always some more features than corresponding products from competitors. Here again the most important points, that are of prime importance for the application described in this paper:

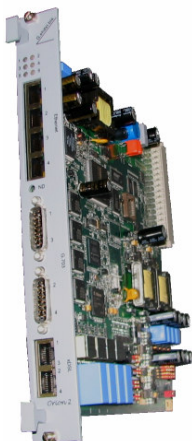
- Components have industrial temperature range (-40°C to +85°C)
- Components never run on the limit because of better specification
- Programmable, flexible and intelligent design, using High-class chipsets
- Complete solution design, including repeaters, including remote power
- Best performance and low power, long life, high quality design

Example: CO/LTU (with Remote Power) ————— Repeaters ————— CPE/NTU



The **FlexDSL** Orion1 and Orion2 DSL modems and systems are based on the G.SHDSL standard (ITU Rec. G.991.2), what represents the best of several symmetric DSL technologies that have been combined into a single industry standard providing rate adaptation, greater reach and performance, spectral compatibility, lower power and application flexibility. The new line code technology, as a result out of the G.SHDSL standard, encode more data within the frequency spectrum and is called TC-PAM (Trellis Coded Pulse Amplitude Modulation).

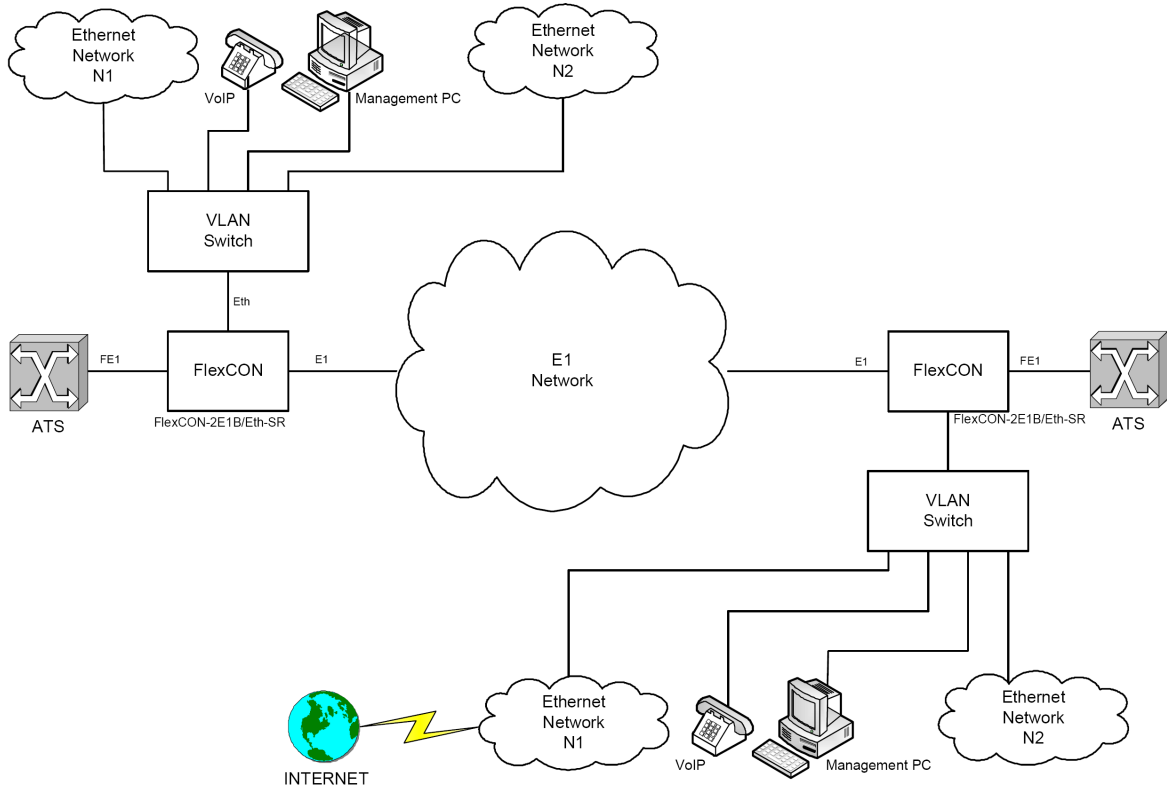
FlexCON-2E1B/Eth-SR, V67 based on Orion2 Hardware



FlexCON-2E1B/Eth-SR, V67 is based on the Orion2 hardware. We just remove the DSL chipsets and profit from the universal and flexible design to have another special functionality.

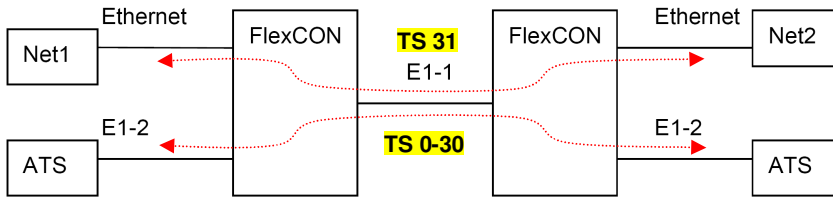
FlexCON-2E1B/Eth-SR, V67 can be used for Ethernet + Fractional E1 (FE1) transmission over an E1 network. This application is important when any carrier just has limited E1 channels in core network but customers want to have ethernet data transmission as well.

The following picture shows the principle application to use this special device.



How to Configure the FlexCON-2E1B/Eth-SR, V67

Example 1:



1. Configure the Network

```
CO_09_NET>NETCONFIG
```

```
-----  
New Network Configuration  
-----
```

```
VLANs & QoS  
Interfaces      : LAN   WAN1  WAN2  Int  
Mode            : access trunk trunk access  
QoS             : 2    7  
VLAN ID        : 1  
VLAN1 VID=1    :      +    +  
VLAN2 VID=2    :      +    +  
VLAN3 VID=3    :      +    +
```

```

VLAN4 VID=4      :          +      +
VLAN5 VID=5      :          +      +
VLAN6 VID=6      :          +      +
VLAN7 VID=7      :          +      +
VLAN8 VID=8      :          +      +
OTHER VLANS      :          +      +
QoS for HPQ      :          3      3
Slicing for LPQ  :         512    512
Ethernet:
Speed/Duplex     :    auto
System:
MAC address      :    00:0f:d9:01:55:bb
IP address       :    192.168.1.152
Subnet mask      :    255.255.255.0
Default gateway  :    192.168.1.154
SNMP:
Send traps to IP:
Community        :    COMMON
SET command      :    Blocked

```

CO_09_NET>

2. Configure the E1's

CO_09_CM>CONFIG

Running Line Configuration

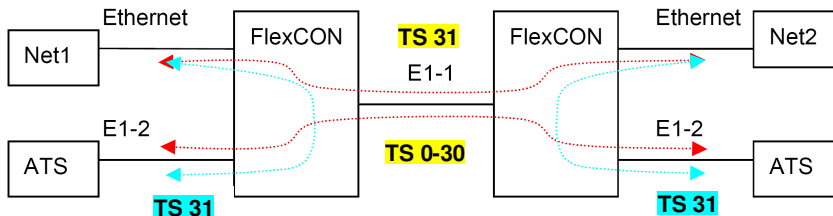
```

E1          E1-1      E1-2
G.704 framing : {==== ON  =====}
CRC4         : ON      ON
AIS Detection : ON      ON
AIS Generation: ON      ON
E1 clock     : DSL     DSL
TS into WAN  : 31      NONE

```

CO_09_CM>

Example 2:



1. Configure the Network

CO_09_NET>NETCONFIG

New Network Configuration

```

VLANs & QoS
Interfaces      :    LAN      WAN1      WAN2      Int
Mode            :    access  trunk     trunk     access
QoS             :          2          7
VLAN ID        :          1
VLAN1 VID=1    :          +          +
VLAN2 VID=2    :          +          +
VLAN3 VID=3    :          +          +

```

```
VLAN4 VID=4      :          +      +
VLAN5 VID=5      :          +      +
VLAN6 VID=6      :          +      +
VLAN7 VID=7      :          +      +
VLAN8 VID=8      :          +      +
OTHER VLANS      :          +      +
QoS for HPQ      :          3      3
Slicing for LPQ  :         512    512
Ethernet:
Speed/Duplex     :    auto
System:
MAC address      :    00:0f:d9:01:55:bb
IP address       :    192.168.1.152
Subnet mask      :    255.255.255.0
Default gateway  :    192.168.1.154
SNMP:
Send traps to IP:
Community        :    COMMON
SET command      :    Blocked
```

CO_09_NET>

2. Configure the E1's

CO_09_CM>CONFIG

Running Line Configuration

```
-----
E1          E1-1          E1-2
G.704 framing : {===== ON =====}
CRC4         : ON         ON
AIS Detection : ON         ON
AIS Generation: ON         ON
E1 clock     : DSL        DSL
TS into WAN  : 31         31
-----
```

CO_09_CM>

Call +41 44 741 5290 today or send an e-mail to info@flexdsl.ch for further information.