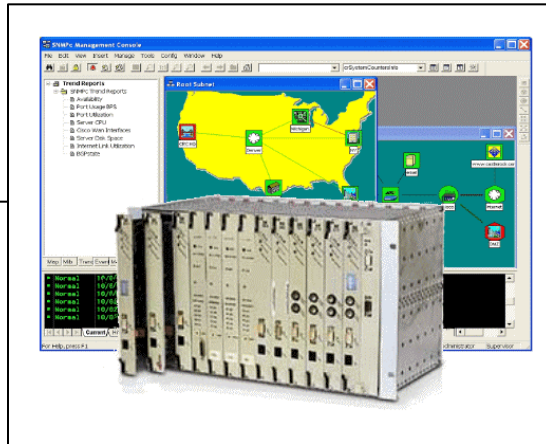


Multiservice
Access Platform
& Management

FlexGain Platform

Universal Access Platform



Features

- TDM and IP Coexistence
- Universal Multiservice Platform
- Multipurpose 19" Mechanics
- Universal Desktop Housings
- Extensive Management Options
- Fail-Safe through Redundancy
- Flexibility through Modular Design
- Scalability through Upgrade Path
- Quality through FlexDSL

FlexGain Platform – One Platform Fits All!

The FlexGain Access Platform family brings a broad range of universal transmission platforms together. Alongside Castlerock SNMPc management software, the FlexGain Platform is a powerful telecommunication solution for telecom, utility, and campus applications. While hosting FlexDSL Orion 1, Orion 2, and Discovery products and providing an extensive range of SHDSL connectivity, the FlexGain Platform additionally supports fiber optic, cross connect (DACs) and voice and data multiplexers for a broad range of TDM and packet based applications. The FlexGain Platform is designed with front access shelves and it is the missing link between fiber and copper transmission requirements. These features and others, ensure that the FlexGain Platform family is the first choice solution when flexibility, cost effectiveness, reliability, and quality are the required attributes.

FlexGain Platform – Grow As You Go!

Unlike traditional repeater bay, DSLAM, or DLC products, the FlexGain Access Platform is not just a product, it is a comprehensive solution offering the opportunity to start with a small footprint and to grow as you go. This approach secures investments while providing an upgrade path to future applications and businesses.

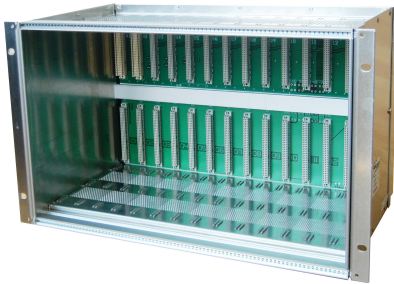
FlexGain Platform – Walk The Talk!

There are no more debates about the various benefits of TDM or IP centric applications. Both technologies have their strength and these strengths have been combined in the FlexGain Platform by allowing coexistence and convergence of both technologies in the same platform. With DSL, fiber, DACs, Mux, VoIP, TDMoIP, Ethernet Switch, and Management options FlexDSL walks the talk!

Specifications are subject to change without notice

Multiservice
Access Platform
& Management

FlexGain Universal Access Platform



Model: FG-R-W, V2

Dimensions: 19"6U, 439x266x248mm (WxHxD), 3.6kg
Number of Slots: 14
- 1 slot for power supply or power supply / management module
- 1 optional management or uplink module
Power: Requires power module (FG-ACU-SR or FG-TCU-SR)
Backplane: Upper backplane only
System Bus: - Ethernet Bus
- RS485
- RS232
Remark: All front access shelf
Power module (48VDC): FG-ACU-SR
Management / power module: FG-TCU-SR

Model: FG-R-PCM/W, V2

Dimensions: 19"6U, 439x266x248mm (WxHxD), 4kg
Number of Slots: 14
- 1 slot for power supply or power supply / management module
- 1 optional management or uplink module
Power: Requires power module (FG-ACU-SR or FG-TCU-SR)
Backplane: Upper and lower backplane (for voice applications)
System Bus: - Ethernet Bus
- RS485
- RS232
Remark: Lower backplane for voice applications only (back access)
Power module (48VDC): FG-ACU-SR

Model: FG-ACU-SR

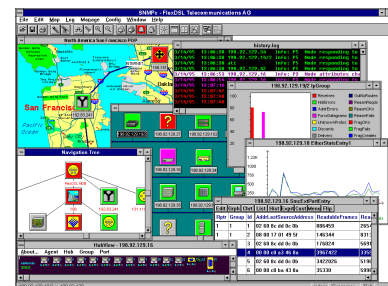
Dimensions: Power module for FG-R-W, V2 and FG-R-PCM/W, V2,
Power: 2x 48VDC (redundant), max. 8A
Alarming: Minor and major alarm detection
Management: Console port
Remark: External clocking input

Model: FG-TCU-SR

Dimensions: Power and management module for FG-R-W, V2 and FG-R-PCM/W, V2, uses slot 1 or 2
Power: 2x 48VDC (redundant), max. 8A
Alarming: Minor and major alarm detection
Management: Console port, Telnet, SNMP V1
Alarming: Minor and major alarm detection
Remark: Internal 4 port Ethernet switch. External clocking input



SNMPC Network Manager Software
from Castle Rock Computing, Inc.
www.castlerock.com



Specifications are subject to change without notice

**Multiservice
Access Platform
& Management**



Model: FG-MRN-AC/DC

Dimensions: 19"/1U, 439x258x43mm (WxDxH), 3.1kg
 Number of Slots: 1
 Power: 48VDC and/or 220VAC
 Remark: 48VDC and voice connectors on the back site



Model: FG-MR2N/Eth

Dimensions: 19"/2U, 439x295x87mm (WxDxH), 4kg
 Number of Slots: 2
 Power: 24VDC or 48VDC
 Remark: All front access shelf



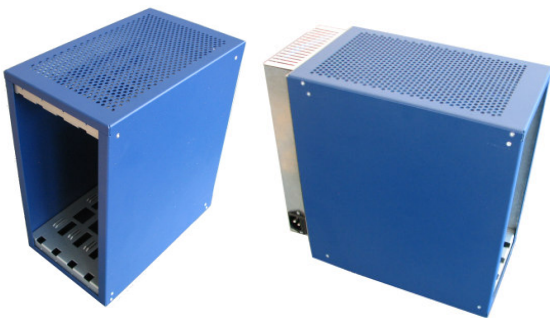
Model: FG-R-Comp

Dimensions: 19"/2U, 294x305x113mm (WxDxH), 1.9kg
 Number of Slots: 3
 Power: 48VDC
 Remark: 48VDC and voice connectors on the back site



Model: FG-UTT1-48xx

Dimensions: 19"/1U, 288x335x45mm (WxDxH), 1.4kg
 Number of Slots: 1
 Power: 48VDC and/or 220VAC, different models available
 Remark: 48VDC/220VAC and Monitor connectors on the back side



Model: FG-UTT4-48xx

Dimensions: 149x278x287mm (WxDxH), 2.8kg
 Number of Slots: 4
 Power: 48VDC and/or 220VAC, different models available
 Remark: 48VDC/220VAC and Monitor connectors on the back side

Specifications are subject to change without notice